

Integrated Solar Inverter and Storage



# Q.HOME CORE

A total energy solution with 15 year warranty  
from quality Qcells

# NEVER COMPROMISE BETWEEN PERFORMANCE AND DESIGN

Modular&Scalable **Battery**

## Q.SAVE

Each 6.86 kWh battery  
up to 3 units scalable



**SAMSUNG SDI**  
Battery Cell

Sleek&Durable

**Metallic Silver**  
Cover



High-performance **Inverter**

## Q.VOLT

4.6 kW  
Hybrid or AC-Coupled

Enhanced Warranty

**15 Year**  
Warranty

For Web Enable

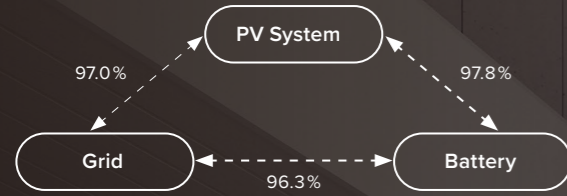
**Network**  
Connectivity

Wi-Fi/LAN



# Q.HOME CORE

## High Conversion Efficiency



## Maximum Energy Generation

Q.OMMAND maximizes energy yields by incorporating real-time weather information.

## Samsung Battery for Safety

SAMSUNG NCA battery cells ensure maximum safety.

## Assembled in South Korea

Assembled in Korea for enhanced quality.

## 15 Years Extended 15 Year Warranty

Enhanced product and performance warranty backed with high quality control.

## Scalable Battery

Three scalable batteries up to 20.5 kWh depending on your energy needs.

## Emergency Backup from Blackout

Automatic transfer to battery power in blackout conditions. (ATS\* Embedded)

## Easy and Fast Installation

Wall-mounted or floor-mounting<sup>(optional)</sup> brackets available for convenience and easy installation.



\* ATS (Automatic Transfer Switch)

A device that automatically transfers a power supply from energy grid to energy storage solutions in case of grid failure.



# Qcells Total Solution

## About Qcells



**Global leading solar company** founded in 1999 in Germany.



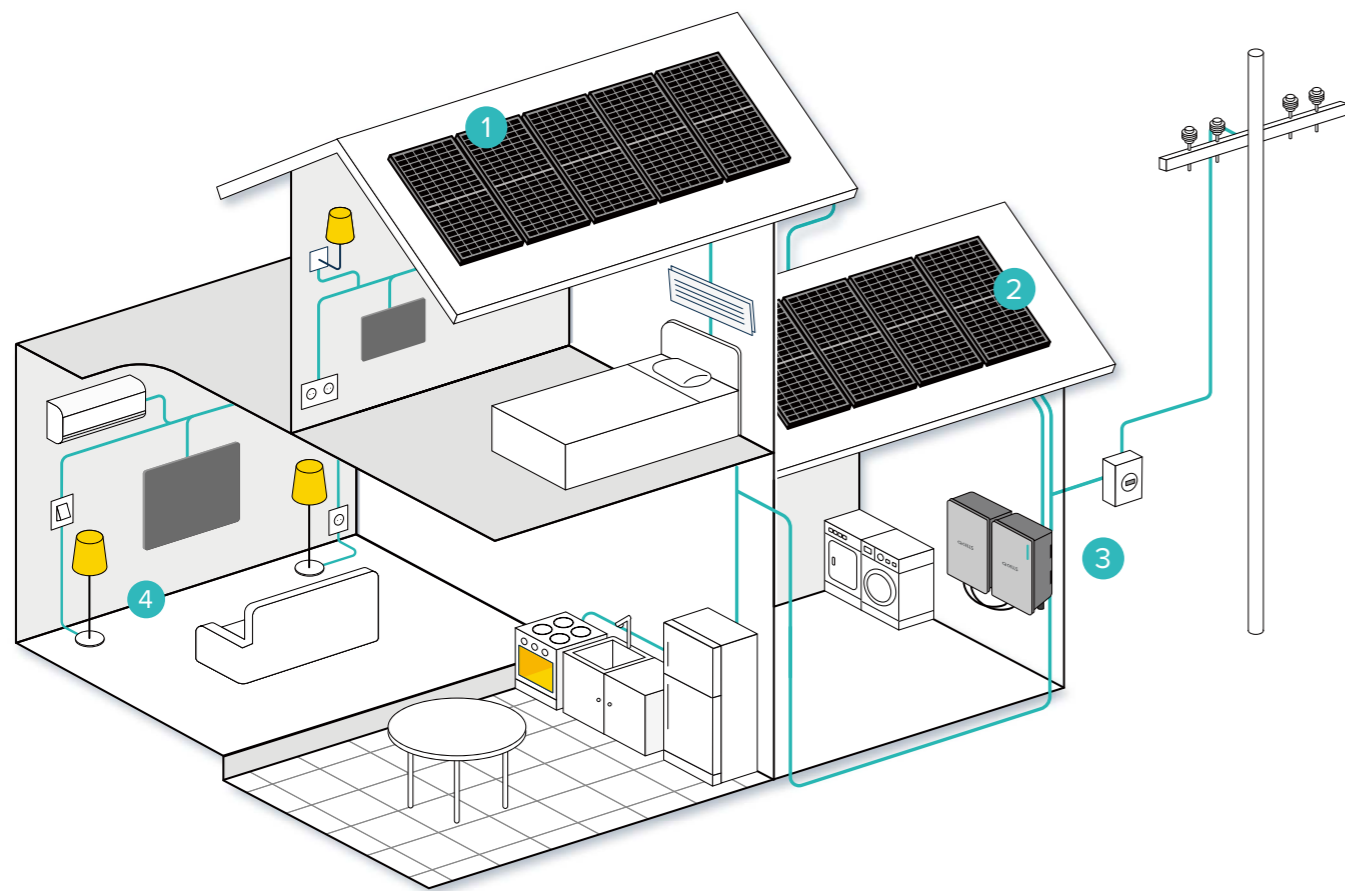
**Winning 'Top Brand PV'** from EUPD for 8 consecutive years in Europe.



**Complete green energy solutions provider** from solar module, ESS, commercial/solar farm projects, and energy retail business.



**An affiliate of Hanwha Group**, a Fortune Global 500 company and the 7th largest conglomerate in South Korea with total assets over US \$197 billion.



### 1 Solar Module

Equipped with state-of-the-art technology, Qcells provides highest quality solar modules for lower electricity costs.

### 2 Mounting System

Qcells provides Q.MOUNT sub-constructions for quick and easy installation on all common types of sloped roofs.

### 3 Energy Storage Solutions

Qcells provides high efficiency inverter and scalable battery optimised for its solar module.

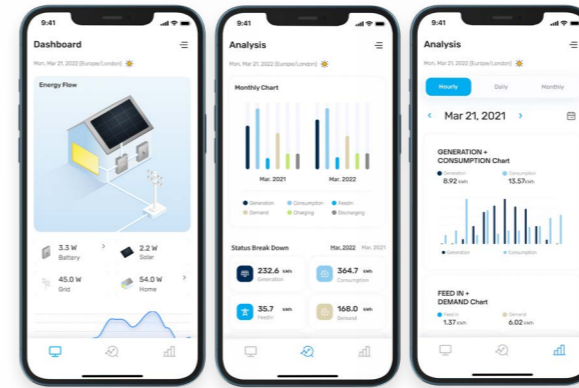
### 4 Home Energy Management System

Q.OMMAND app allows energy monitoring and management easier than ever.

# Mobile Apps

## Q.OMMAND HOME FOR HOMEOWNERS

For monitoring and managing energy generation, storage, and usage anytime, anywhere.



- **Real-Time Energy Flow**  
Real-time updated every three seconds.
- **Regular Report**  
Monthly, daily, and hourly reporting available.
- **Smart Functions**  
Q.OMMAND Home provides three smart functions as below.
- **Notifications**  
Provide energy overview, battery performance, usage data, and customised alerts and more.

### Dynamic Optimiser

Maximised Energy Yield

Qcells advanced AI algorithm incorporates weather information with real-time data from your solar modules and energy storage system to maximise energy usage and generation.

### Energy Backup

Blackout Precaution

In case of blackout, you can set the amount of energy your Q.HOME CORE will always store.

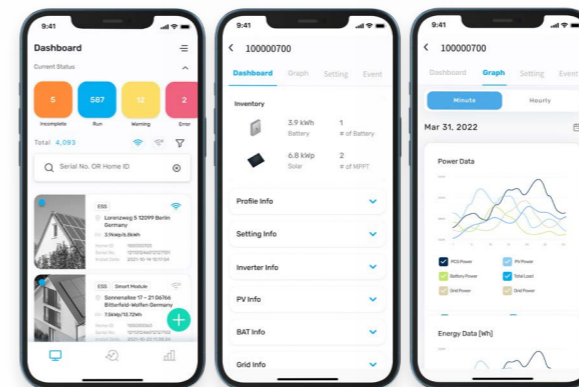
### OTA (Over-The-Air)

Software Updates

Cloud-based software updates continuously adds new monitoring and management features.

## Q.OMMAND PRO FOR INSTALLERS

For fast and easy O&M services.



- **Dashboard**  
Installers can check the status of multiple sites at a glance and able to find a particular site through search.
- **Tracking History**  
Installers can track the history of each site including service history, error messages, replacements and others.
- **Notifications**  
Immediately notifies when service or maintenance is required.
- **Grouping System**  
Installers can group the sites by region to easily modify grid code, energy policy, and more.

## Q.OMMAND GO FOR COMMISSIONING

For easy installation of Q.HOME CORE.

### FOR COMMISSIONING

- 1 **Network Connection**  
Simple connection to the network within the house.
- 2 **One-click Update**  
One-click update to the latest version.
- 3 **Date Setting**  
Save the date and time of the installation.
- 4 **Device Setting**  
Initial settings of solar modules, batteries, and meters, including grid code, country and time zone.